



SPV SERİSİ 2/2 SELENOID POPET VALFLER

SPV Serisi 2/2 Selenoid Popet Valfler, Endüstriyel hidrolik sektörde devre elemanı olarak kullanılır. Bu valf hidrolik sistemde pompadan gelen basıncın geçişine engel teşkil etmeyecek konumdadır. Üzerine takılan bobin elektrik (12V-24V-220V) verildiğinde bir manyetik alan oluşturarak valfin içindeki pimi hareket ettirerek sistemi açık/kapalı hale getirerek hidrolik pompadan gelen basınca engel olur. Manyetik alan (elektrik) kesildiğinde sistem tekrar açık/kapalı konuma gelir.



Malzeme	Alüminyum
Vida Ölçüsü	BSP (İsteğe Bağlı: NPT, Metrik)
Sızdırmazlık	Nitril O-ring (NBR)
Çalışma Sıcaklığı	-30 °C ile +110 °C
Isıl İşlem	İç parçalarda
Kullanım Alanı	Genel hidrolik uygulamaları

SPV SERIES 2/2 SELENOID POPET VALVES

SPV series 2/2 Solenoid Popet Valves are used as circuit elements in industrial hydraulic industry. This Valve is in a position to prevent the passage of pressure from the pump in the hydraulic system. When the electric coil installed on it is given (12V-24V-220v), it creates a magnetic field and moves the pin inside the valve to prevent the pressure coming from the hydraulic pump by turning the system on/off. When the magnetic field (electricity) is cut, the system is turned on/off again.

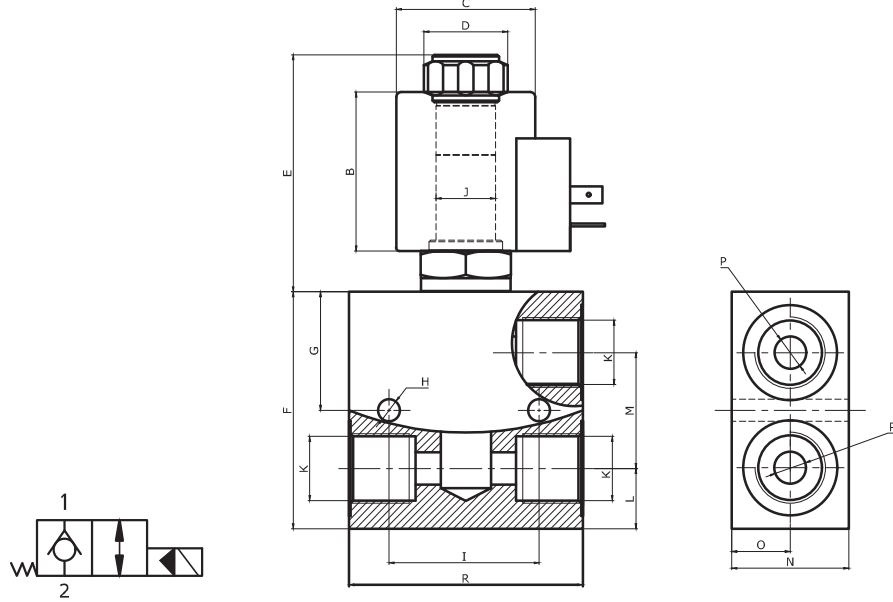
Material	Aluminium
Thread Size	BSP (Upon Request: NPT, Metric)
Sealing	Nitrile O-ring (NBR)
Working Temperature	-30 °C and +110 °C
Heat Treatment	Internal parts
Applications	General Hydraulic Applications

234



FER-RO / SPV SERİSİ 2/2 SELENOID POPET VALFLER

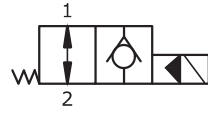
FER-RO / SPV SERIES 2/2 SELENOID POPET VALVES



Teknik Özellikler Technical Specifications

Kod (Code)	Kartriç Tipi (Cartridge Type)	Vida Ölçüsü (Thread Size)	Kavite (Cavity)	Nominal Akım (Rated Flow)	Çalışma Basıncı (Working Pressure) Bar	Ölçüler - mm (Dimensions) - mm															
						B	C	D	E	F	G	H	I	J	K	L	M	N	O	P	R
SPVNCBCLU34C8W2	Normalde Kapalı / Normally Closed	3/4" UNF	8:2	33 L/Dk.(Min)	310	47	41.50	25	70	60	30	6.50	35.30	17.80	3/8" BSP	14	33.20	30	15	6	60
SPVNCBCLU78C10W2	Normalde Kapalı / Normally Closed	7/8" UNF	10:2	43 L/Dk.(Min)	310	47	41.50	25	70	70	35	6.50	45	17.80	1/2" BSP	18	34.20	35	17.50	9.50	70
SPVNCBCLU116C12W2	Normalde Kapalı / Normally Closed	1-1/16" UNF	12:2	114 L/Dk.(Min)	310	47	41.50	25	72	85	42	8.50	50	17.80	3/4" BSP	20.50	44	40	20	19	80
SPVNCBCLU116C12W2*	Normalde Kapalı / Normally Closed	1-1/16" UNF	12:2	114 L/Dk.(Min)	310	47	41.50	25	72	85	42	8.50	50	17.80	3/4" BSP	20.50	44	40	20	19	80
SPVNCBCLU1516C16W2	Normalde Kapalı / Normally Closed	1-5/16" UNF	16:2	-	-	-	-	-	-	-	-	-	-	-	-	-	-	-	-	-	-

*SPVNCBCLU116C12W2 kodlu ürün EATON kavite uyumludur
/ SPVNCBCLU116C12W2 code product cavity is compatible with EATON

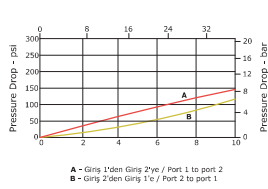


Teknik Özellikler Technical Specifications

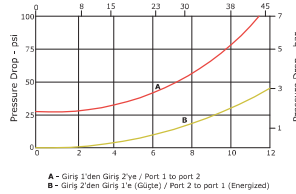
Kod (Code)	Kartriç Tipi (Cartridge Type)	Vida Ölçüsü (Thread Size)	Kavite (Cavity)	Nominal Akım (Rated Flow)	Çalışma Basıncı (Working Pressure) Bar	Ölçüler - mm (Dimensions) - mm															
						B	C	D	E	F	G	H	I	J	K	L	M	N	O	P	R
SPVNAECBU34C8W2	Normalde Açık / Normally Open	3/4" UNF	8:2	33 L/Dk.(Min)	310	47	41.50	25	70	60	30	6.50	35.30	17.80	3/8" BSP	14	33.20	30	15	6	60
SPVNAECBU78C10W2	Normalde Açık / Normally Open	7/8" UNF	10:2	43 L/Dk.(Min)	310	47	41.50	25	70	70	35	6.50	45	17.80	1/2" BSP	18	34.20	35	17.50	9.50	70
SPVNAECBU116C12W2	Normalde Açık / Normally Open	1-1/16" UNF	12:2	114 L/Dk.(Min)	310	47	41.50	25	72	85	42	8.50	50	17.80	3/4" BSP	20.50	44	40	20	19	80
SPVNAECBU116C12W2*	Normalde Açık / Normally Open	1-1/16" UNF	12:2	114 L/Dk.(Min)	310	47	41.50	25	72	85	42	8.50	50	17.80	3/4" BSP	20.50	44	40	20	19	80
SPVNAECBU1516C16W2	Normalde Açık / Normally Open	1-5/16" UNF	16:2	-	-	-	-	-	-	-	-	-	-	-	-	-	-	-	-	-	-

*SPVNAECBU116C12W2 kodlu ürün EATON kavite uyumludur
/ SPVNAECBU116C12W2 code product cavity is compatible with EATON

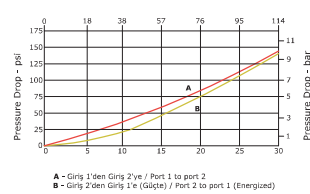
3/4" UNF - Normalde Kapalı / Normally Closed



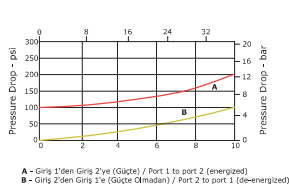
7/8" UNF - Normalde Kapalı / Normally Closed



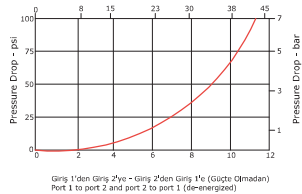
1 1/16" UNF - Normalde Kapalı / Normally Closed



3/4" UNF - Normalde Açık / Normally Open



7/8" UNF - Normalde Açık / Normally Open



1 1/16" UNF - Normalde Açık / Normally Open

